

# COLVIN PACKAGING PRODUCTS

"Experts in Light and Heavy Gauge Vacuum Forming..."

2700 Regal Park Anaheim, CA 92806

WebAddress - [www.cpproducts.net](http://www.cpproducts.net)

(714) 630-3850 - (714) 630-3857 Fax

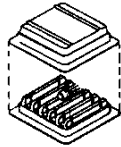


## Small Component Packaging

### Full Range of ESD Protection Available

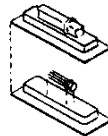
Conductive Styrene, Static Dissipative PVC, Anti-Static PVC, Non-ESD PVC  
Individual or Multi-Pack Component Protection

#### TRANSISTORS MULTI-PACKS



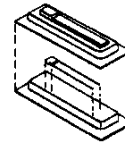
Part No.	Cavity	Lead Length	Style
CPP1075-25	1.750 x .250 dia.	.500	10 pack
CPP1075-28	1.500 x .300 dia.	.500	T05 10 pack
CPP1075-57	1.500 x .300 dia.	.500	T05 20 pack
CPP1075-49	1.500 x .300 dia.	.500	T05 40 pack
CPP1075-39	1.750 x .300 dia.	1.250	50 OR 100 pack
CPP1075-42	2.750 x .500 dia.	.437	T08 40 pack

#### TRANSISTORS (INDIVIDUAL OR DUAL CAVITIES)



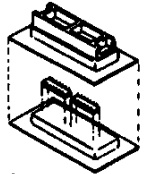
Part No.	Cavity	Style
CPP1075-17	.500 dia. x 1.500	single
CPP1075-38	.300 dia. x 1.500	dual
CPP1075-38	.300 dia. x .750	single (TO 18)
CPP1075-52	.187 dia. x 1.500	dual (TO 72)

#### RADIAL LEAD



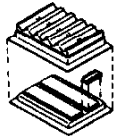
Part No.	Cavity	Lead Length
CPP1075-19	.312 x .312	2.0
CPP1075-22	.250 x .250	2.125
CPP1075-22	.312 x .312	2.0
CPP1075-56	.500 x .500	2.375
CPP1075-59	.500 x .500	1.625

#### INTEGRATED CIRCUITS (INDIVIDUAL OR DUAL CAVITIES)



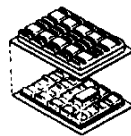
Part No.	Cavity	Lead Length	Style
CPP1075-24	.750 x .310	.250	14/16 pin
CPP1075-31	2.0 x .875	.500	28 pin
CPP1075-36	2.250 x .750	.375	
CPP1075-26	2.0 x .500	.375	14/16 pin (S or D)
CPP1075-55	3.125 x .750	.375	

#### INTEGRATED CIRCUITS MULTI-PACKS



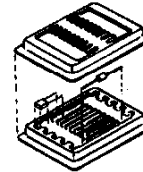
Part No.	Cavity	Lead Length	Style
CPP1075-35	.750 x .375	.375	14/16 pin
CPP1075-37	.750 x .500	.437	
CPP1075-211	1.375 x 1.0	.500	40 pin

#### INTEGRATED CIRCUITS MULTI-PACKS



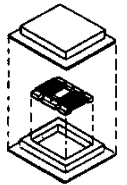
Part No.	Cavity	Lead Length
CPP1075-29	1.250 x .550	.250
CPP1075-27	1.500 x .550	.250
CPP1075-34	2.500 x .550	.220

#### AXIAL/RADIAL LEAD MULTI-PACKS



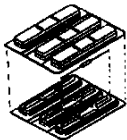
Part No.	Cavity	Lead Length	Style
CPP784-377	.500 x .250 dia.	2.0	axial only
CPP277-8	.625 x .187 dia.	1.500	axial
CPP277-8	.375 x .375	1.500	radial

#### BARNES CARRIER PACK



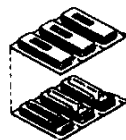
Part No.	Cavity
PHE21-1171-A	1.0 x .750 x .250
PHE21-1171-B	1.250 x 1.250 x .312
PHE21-1171-C	1.600 x 1.600 x .375

#### LMSC PACKAGING AXIAL LEADS



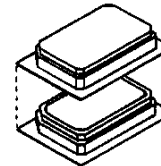
Part No.	Cavity	Lead Length
PHE21-1172-501	.500 x .250 dia.	1.50
PHE21-1172-503	.875 x .375 dia.	1.50
PHE21-1172-505	1.312 x .500 dia.	1.625
PHE21-1172-507	.500 x .250 dia.	1.50
PHE21-1172-509	.875 x .375 dia.	1.50
PHE21-1172-511	1.312 x .500 dia.	1.625

#### LMSC PACKAGING TRANSISTORS



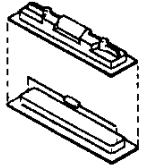
Part No.	Cavity	Lead Length
PHE21-1183-505	.275 dia. x 2.125	1.55
PHE21-1183-507	.400 dia. x 2.125	1.55

#### LMSC PACKAGING DUAL IN LINE DEVICE



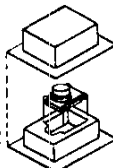
Part No.	Cavity
PHE21-1184-501	1.0 x .625 x .375
PHE21-1184-503	2.187 x .875 x .562
PHE21-1184-505	1.0 x .625 x .375
PHE21-1184-507	2.187 x .875 x .562

#### AXIAL LEADS



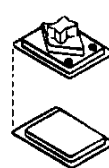
Part No.	Cavity	Lead Length
CPP1075-11	.500 x .125 dia.	1.500
CPP1075-12	.375 x .065 dia.	1.500
CPP1075-13	.375 x .065 dia.	1.0
CPP1075-14	.250 x .065 dia.	1.500
CPP1075-20	.375 x .050 dia.	1.750
CPP1075-21	.750 x .250 dia.	1.500
CPP1075-23	.500 x .375 dia.	1.500
CPP1075-30	.750 x .125 dia.	1.625
CPP1075-33	1.125 x .375 dia.	1.750

#### SINGLE PACK FOR TO CAN AND BARNES CARRIER



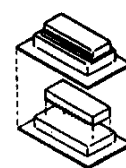
Part No.	Cavity
CPP1075-50	1.0 x .750 x .750

#### TRANSISTOR (TO 3)



Part No.	Cavity
CPP1075-54	1.500 x 1.0 x 1.0

#### SINGLE PACK SIP



Part No.	Cavity
CPP1075-15	1.500 x 1.375 x .187

CP Products, a Certified, Woman Owned, Small Business  
If you would like more information please call or e-mail us at [sales@cpproducts.net](mailto:sales@cpproducts.net).